



**T.M.S.**

**Technical Maintenance Support**



**Capability Statement + Company Profile**

Reliable mine site and workshop maintenance, fabrication and  
construction services + quality equipment hire





# About

Technical Maintenance Support (TMS) features a solid 13-year history. We have built a reputation for delivering quality maintenance and shutdown services to mining industry clients throughout regional and remote areas of Western Australia and the Northern Territory.

Established in 2012 by Wesley Johnson, the company has grown rapidly into a reliable, trusted, locally owned and thriving business - underpinned by the strong values and ethical standards that we display today. The TMS management group is led by our hands on Managing Director, Wesley, and together they oversee a team of 200 employees over the three divisions of:

- Administration
- Workshop
- On-Site

The experience and knowledge our management team have gained over the years is evident in their understanding of how critical down time is within the mining industry. We pride ourselves on our skilled, qualified, and experienced workforce combined with our ability to deliver all projects within deadline, inside budget and to the highest possible standard.

To date, we have successfully managed the delivery of projects of various scopes and sizes, ranging in value from \$5,000 to \$30,000,000. Our vision is to provide high quality maintenance, machining, construction, engineering and fabrication services both on and off site, to ultimately enrich communities throughout Western Australia and the Northern Territory.

# Our People

As an independently owned and operated business, we recognise the importance of our employees by actively investing in ongoing training and professional development.

## **Managing Director** | Wesley Johnson

The businessman behind it all. Wesley is a Fitter/Machinist by trade and is our proactive Managing Director. From manning jobs and running the workshops to overseeing jobs onsite and estimating projects he does it all! You will still often find Wes out in the field with our clients, managing projects and coordinating his team. He has an unrivalled work ethic and a drive to succeed like no other.

## **Kalgoorlie General Manager** | Scott McQualter

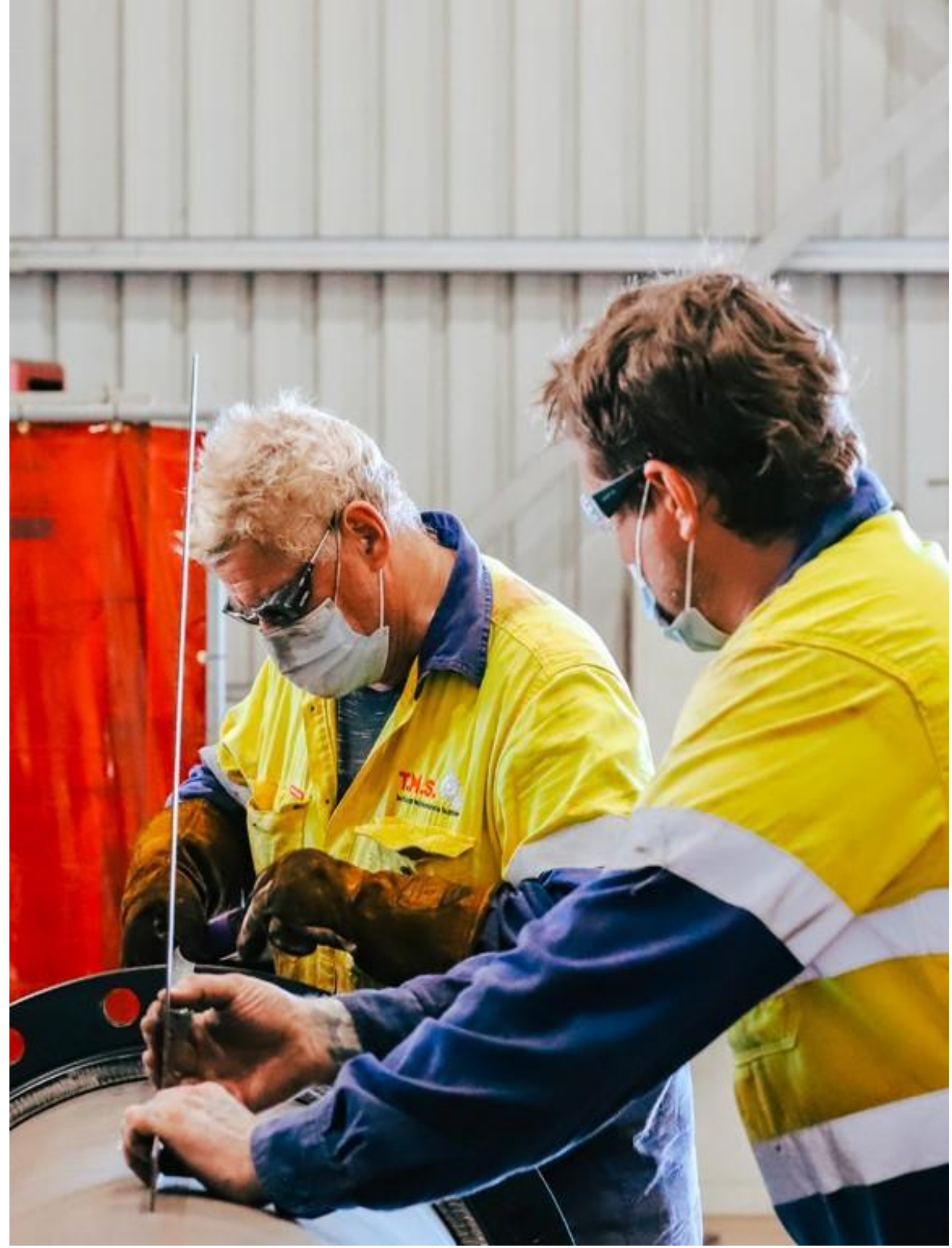
Scott holds a Cert III in Mechanical Engineering and has over 12 years' experience as a Fixed Plant & Mobile Plant Maintenance Superintendent in the Kalgoorlie region. Since joining TMS, Scott has been responsible for the start-up of Kalgoorlie Operations, whilst overseeing our Perth Operations. He has also been providing support services to the Kalgoorlie gold and nickel producers.

## **Perth Operations Manager** | Zade Connell

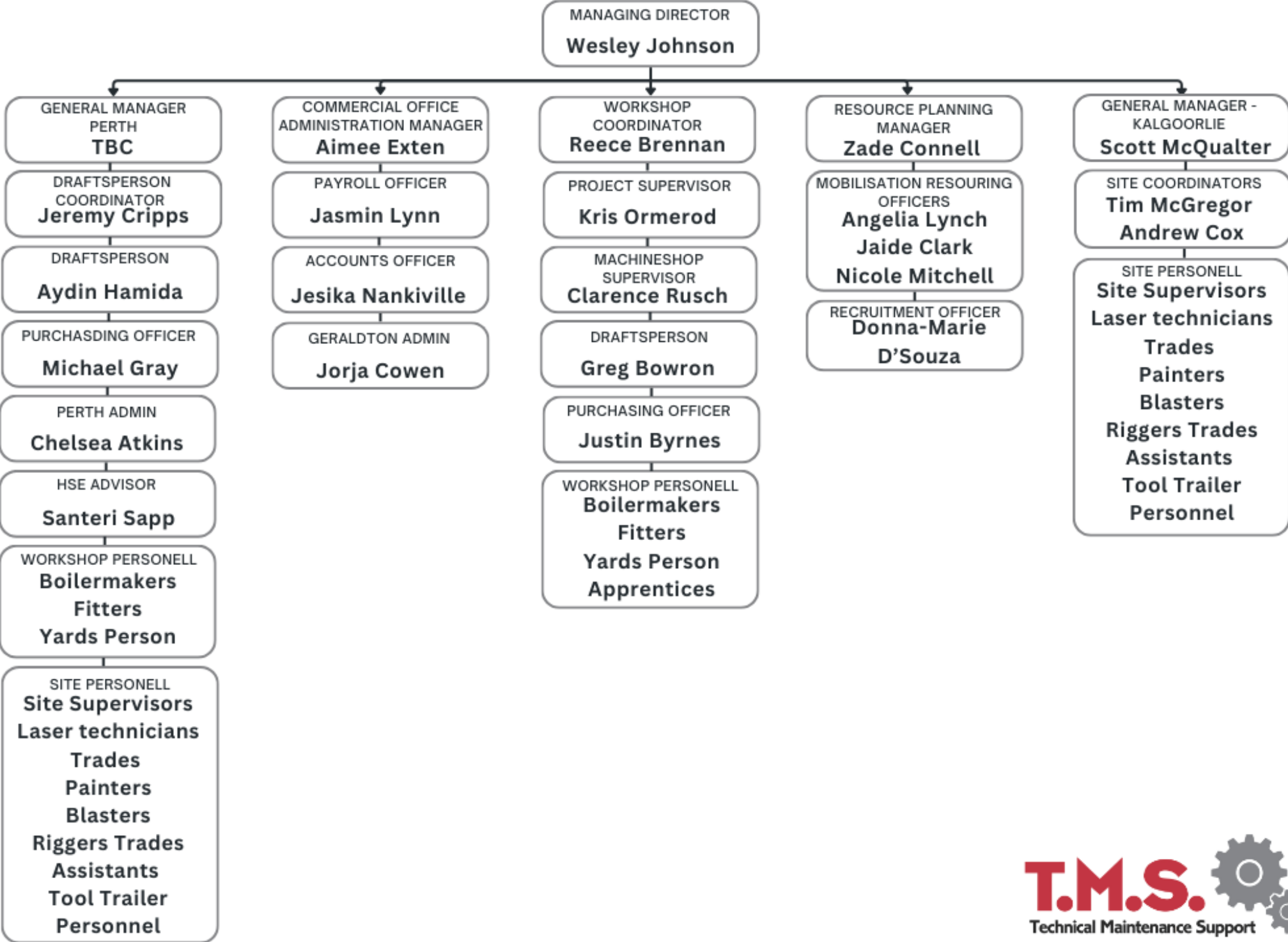
Zade holds a Cert III in Mechanical Engineering - Mechanical Trade and has been with the company since 2022, coming on board as a supervisor who has now made the move to Perth to oversee the operation. He has been involved in scoping, managing and executing major shutdowns for our clients in the Pilbara region.

## **Commercial Office Administration Manager** | Aimee Exten

With over 10 years in Administration Management, Aimee provides strong operational, financial and workforce administration leadership to oversee our Human Resources, Accounts and Administrative teams. She plays a key role in high level administrative support across all business functions and her dedication and attention to detail ensure our day-to-day processes are met and the business runs smoothly.



# ORGANISATIONAL CHART



# Client Relationships

We've built a history of positive working relationships with a range of clients throughout Western Australia and the Northern Territory including, but not limited to: -

- Pilbara Minerals
- Newcrest Mining
- Newmont Mining
- BHP
- Northern Star Resources
- Karara Mining Ltd

## Location | Geraldton, WA

With our custom-built office and three state-of-the-art workshops ideally located in Geraldton, TMS are well equipped to deliver maintenance, machining, construction, engineering, and fabrication both off and on site, throughout Western Australia and the Northern Territory.

## Location | Perth, WA

In 2023 we expanded our operations to Perth. This office serves as a presence point for all personnel residing in the city, as well as having our experienced drafting team, Management and admin support based in Malaga. Recently, our Perth office has increased its' capabilities with our new workshop launching in 2024.

## Location | Kalgoorlie, WA

Our next major step in the buildup of TMS is to open an office/workshop in Kalgoorlie. Our Kalgoorlie General Manager will oversee future operations at this location.

We have repeatedly demonstrated the ability to deliver projects in remote and regional environments where access to resources can be challenging and effective planning is vital





# Services

TMS offer a diverse range of quality maintenance, inspections, fabrication and construction services. Our skilled team are trained in the latest industry methods, ensuring optimum productivity and efficiency.

## MINE SITE SERVICES

- Machining & Fitting
- Shutdown Services & Support
- Construction & Projects
- Equipment Hire
- Painting & Blasting
- Laser Alignment & Precision Measuring
- Gear Alignment & Run Outs
- Poly Welding

## WORKSHOP SERVICES

- Machining
- CNC Machining
- Fitting & Fabrication
- Engineering
- Drafting
- General Maintenance
- Painting & Blasting
- Rubber Lining
- Projects



# Drafting

We deliver precise, efficient mining designs through advanced CAD & scanning technology, ensuring accuracy and safety in every project.

At TMS, we pride ourselves on delivering top-tier engineering design services, specifically tailored to the unique demands of the mining industry. Our expertise extends beyond basic drafting to encompass comprehensive computer-aided design (CAD), utilising both 2D and 3D modeling to provide a complete visualisation of your mining infrastructure needs. From concept to execution, our detailed models help you see every aspect of your project before it becomes reality, ensuring precise planning and reducing the risk of costly errors during construction or installation.

Our team excels in both structural and mechanical drafting services, creating robust designs that address the complex requirements of mine sites. Whether it's the intricate layout of pulley matrices, the efficient design of chutes and pipework, or the development of specialised parts, we combine industry experience with cutting-edge technology to deliver solutions that are functional, safe, and optimised for performance.

Capturing exact site conditions using 3D Laser Scanning Technology, we integrate the real-world with 3D point cloud data into our designs, ensuring our drafts fit perfectly into your operation's existing framework or planned expansions. Throughout this process, we develop high-quality engineering designs that meet industry standards, streamline workflows, and enhance project efficiency. Our commitment to accuracy and attention to detail allows us to provide reliable, innovative solutions that keep your mining operations running efficiently and economically.

# Plant & Equipment Hire

Our extensive fleet of well-maintained trucks, vehicles, plant and equipment enable us to offer a variety of solutions and deliver multiple projects simultaneously.

We offer a variety of plant and equipment for hire to our clients, including:

- Small Tool Chests (site boxes)
- Small Tandem Axle Tool Trailers
- Medium Tool Trailer
- Large Tool Trailers & Trucks
- Polywelders
- Site Compliant Vehicles (4WD, Bus, Trucks)
- GoPro Laser Alignment Technology
- Commtest VB7 Vibration Analysis Equipment
- Vibration Meter 320
- Assorted Precision Measuring Equipment
- Hytorc Equipment
- Generators & Welders
- Faro Focus Premium 3D Scanner
- 25T Franna Crane
- Onsite Painting & Blasting Equipment





# Agriculture

Both hailing from farming backgrounds, Jenna and Wesley Johnson understands the importance of Agricultural operations.

At TMS, we pride ourselves on delivering innovative, durable and customised solutions for the Agricultural industry. With a deep understanding of the challenges faced by modern farmers, we specialise in the design and fabrication of high-quality Agricultural equipment, including comb trailers, chaser bins and rock rakes.

**Comb Trailers:** Our comb trailers are engineered for efficiency, ensuring safe and easy transportation of harvest fronts. Built with robust materials and design for ease of use, our comb trailers offer unmatched reliability in the field.

**Chaser Bins:** Designed to optimize grain handling and reduce down-time, our chaser bins are tailored to meet the demands of high-capacity farming operations. We focus on strength, mobility and user-friendly features, ensuring harvest is managed smoothly and efficiently.

**Rock Rakes:** Our rock rakes are crafted for durability and performances, effectively clearing paddocks of debris to prepare the land for seeding. Precision-engineered, they are built to withstand tough conditions while maximising productivity.

With commitment to quality innovation, TMS delivers equipment that enhances productivity and supports the success of Agricultural operations. Trust us to be your partner in the field, providing solutions that work as hard as you do.





# Difference

## PLANNING

We understand the importance of developing a functional and achievable plan to ensure the success of all works undertaken within a project.

Creation and implementation of a quality strategic plan will reduce down-time, improve cost control and optimize outages for the best possible chance of success. At TMS, we're more than happy to support your planning group or build a customised plan dependent on your project needs.

## REPORTING

We believe that providing a detailed report at the conclusion of all major projects is a necessity.

Our reports are transparent, objective and include findings and recommendations for future projects. These reports are critical for future planning and contribute to our client's piece of mind. We operate under a philosophy of continuous improvement in quality and performance.



# Compliance

## Health and Safety

Providing a safe and healthy work environment for our employees is paramount. Our policies and procedures have been developed through a combination of extensive experience in the mining industry, consultation, supervision and ongoing professional training and development. We take great care to ensure that all our work practices comply with the “Workplace Health and Safety Act” and other relevant legislation, on site policies, codes of practice and industry standards.

## Insurance

To ensure our clients, our team, the public and our stakeholders are protected, we are covered for Public & Products Liability, Professional Indemnity and Workers Compensation Insurance.

If you require a copy of a cover note, please reach out to our Administration team at [admin@tmsupport.com.au](mailto:admin@tmsupport.com.au)

## Environment

We are committed to minimizing our impacts on the environment and environmental improvement. We work with our clients, suppliers and the community to develop policies and adopt innovative procedures that reduce waste, increase the use of environmentally acceptable materials and actively promote environmental awareness amongst our team. We develop and implement an Environmental Management Plan for every project we undertake.

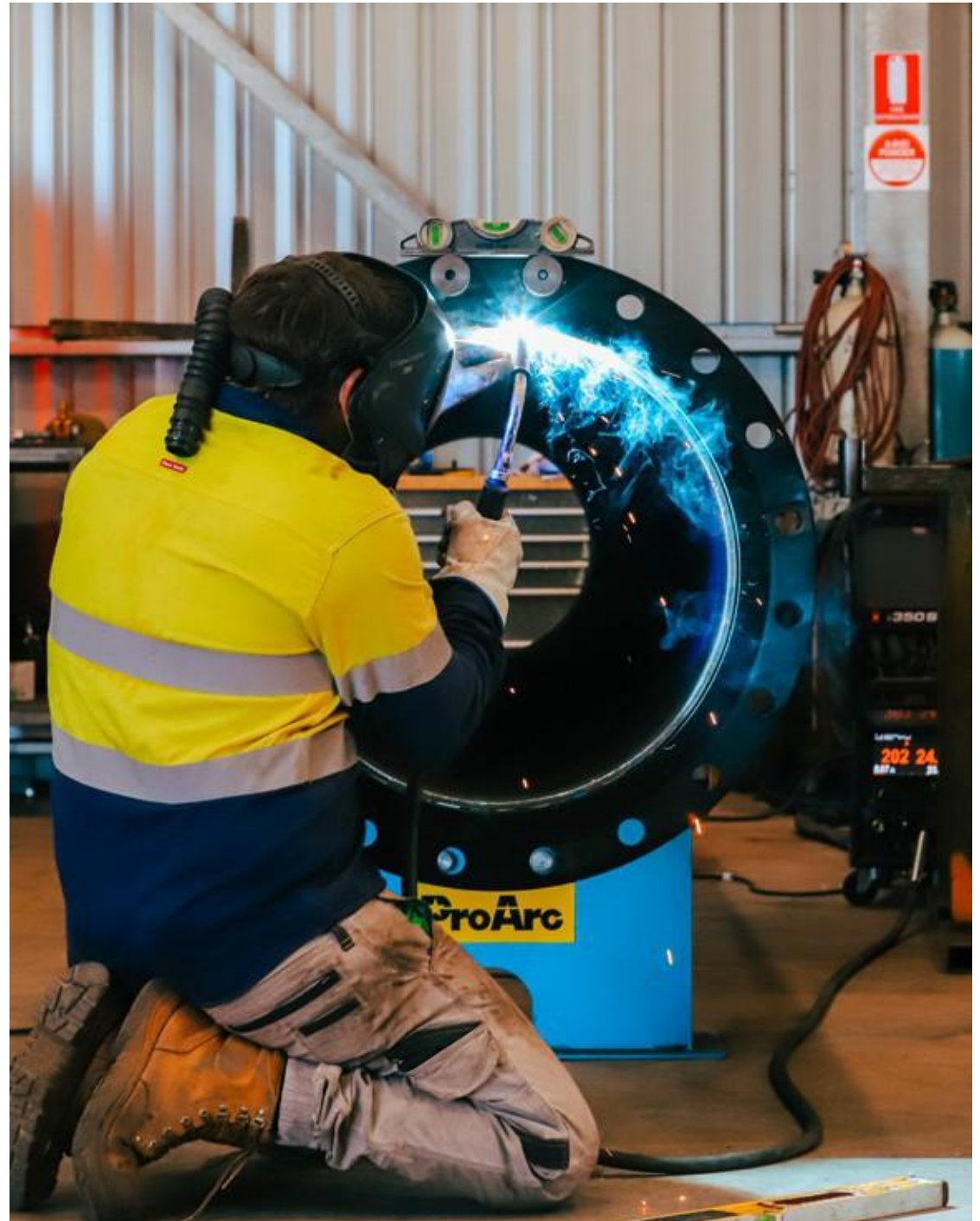


# Community Engagement

We have donated our time and resources to a variety of sporting events, clubs, charities and community events over the past decade.

We believe that as a successful Western Australian business it is our responsibility to give back to the community that supports us.

- Bluff Point Strathalbyn Cricket Club
- Midwest Charity Begins at Home
- Northampton Shire
- Geraldton Hockey Association
- Lions Cancer Institute Special Children's Big Day Out
- Northampton Tourist Association
- Batavia Coast Baseball and Tee-ball League
- Moonyoonooka Horse and Pony Club
- Major sponsors of the 2022 WAFL & WAFLW match in Northampton





# Case Studies

## WORKSHOP PROJECTS

Machining: Gear Slew Ring Covers  
Client: Midwest Port Authority  
Location: TMS Workshop  
Time Frame: February 2022  
Value: \$22k

CNC Machining: Main Filter Support Rails  
Client: Karara Mining Ltd  
Location: TMS Workshop & KML mine site  
Time Frame: 2018 - ongoing  
Value: \$5mil

Fabrication: 60x 750NB Tails Pipe Spools  
Client: Newcrest Mining Ltd  
Location: TMS Workshop & Telfer mine site  
Time Frame: January 2021  
Value: \$780k

## MINE SITE PROJECTS

Mill: Ball Mill Works  
Client: Newmont  
Location: Tanami  
Time Frame: September 2021  
Value: \$350k

Gearbox: Hoffman Gearbox & Trunnion Seals  
Client: Newmont  
Location: Tanami  
Time Frame: September 2021  
Value: \$500k

Crusher: Countershafts & Eccentric Works  
Client: Karara Mining Ltd  
Location: KML Mine Site  
Time Frame: 2018  
Value: \$200k

“For 5+ years we have called on TMS to assist with our specialised maintenance requirements on our ball mills and CDS FFP2500 filter presses.

The TMS team have been proactive, reliable, safety-focused and have a strong work ethic. The skills and technical knowledge provided are of a very high level. As a result, our availability and the reliability of our filter presses and ball mills has improved. TMS always try to respond to breakdown situations and have helped us out on many occasions. TMS management are professional, proactive, and very responsive.

**Justin Macdonald** | Karara Mining Ltd



# Projects

**The Work:** Sand Stacker Refurb

**Client:** Iluka Resources

**Location:** TMS Workshop & Cataby

**Time Frame:** July 2023 - September 2023

**Value:** \$300k

**The Work:** Tank 24 Fabrication

**Client:** Pilbra Minerals

**Location:** Pilgangoora Operations

**Time Frame:** February 2022 - March 2022

**Value:** \$178k

**The Work:** Tank 25 Fabrication

**Client:** Pilbra Minerals

**Location:** Pilgangoora Operations

**Time Frame:** February 2022 - March 2022

**Value:** \$191k

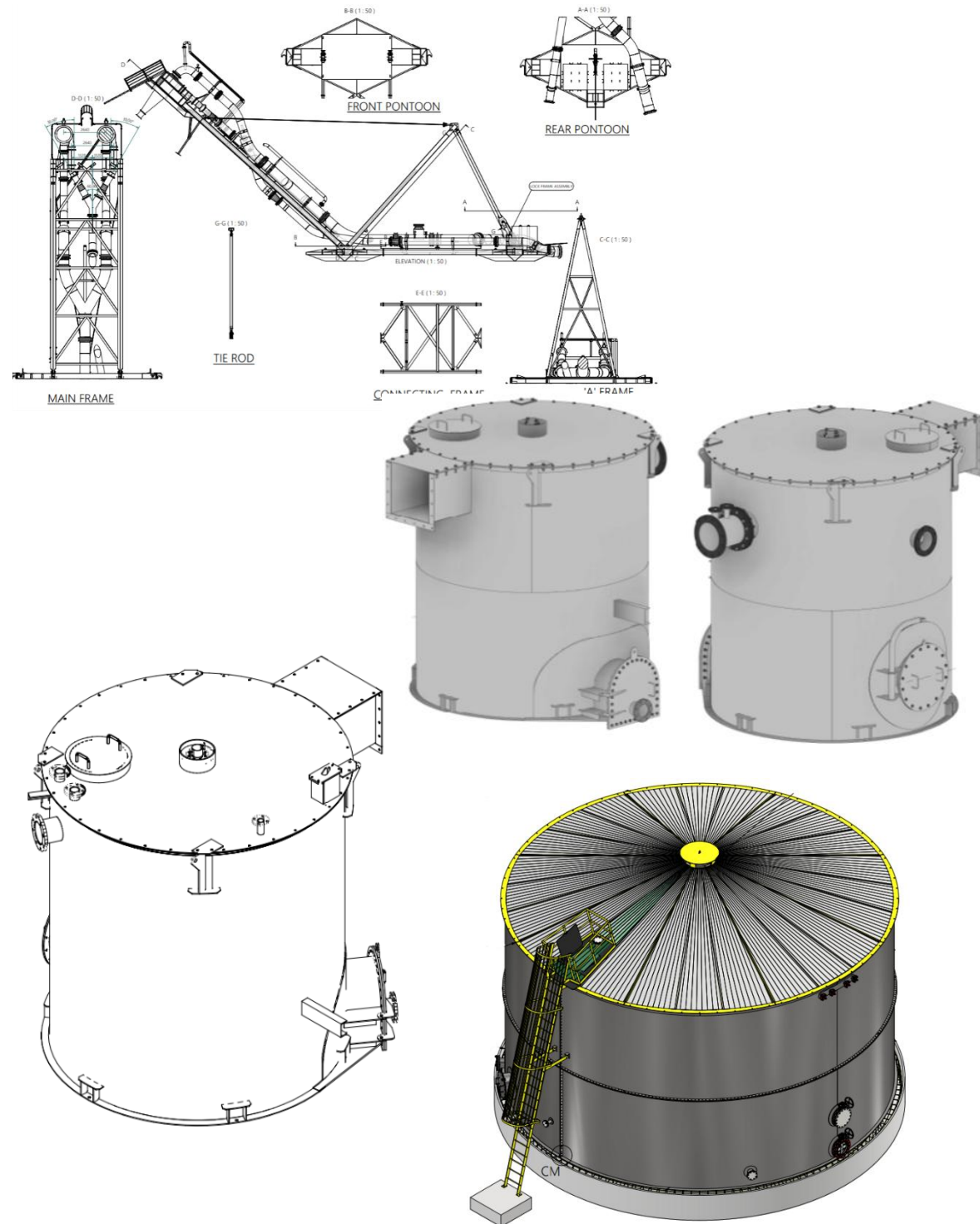
**The Work:** Raw Water Tank Fabrication

**Client:** Pilbra Minerals

**Location:** TMS Workshop & Pilgangoora

**Time Frame:** December 2023 - January 2024

**Value:** \$900k



# Specialised

**Job:** Overhaul Screen Exciter

**Location:** Pilgangoora Operations

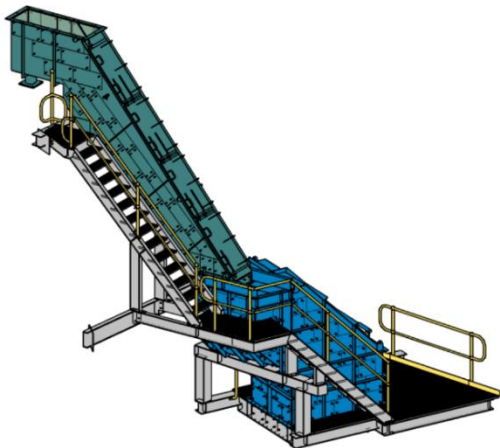
**Client:** Pilbara Minerals



**Job:** Product Screen Oversize Bypass Chute, Redesign of Quaternary Crusher Surge Bin and Access Stairway

**Location:** Higginsville

**Client:** Westgold



**Job:** Machine 2x Ball Mill Drive Couplings

**Location:** Pilgangoora Operations

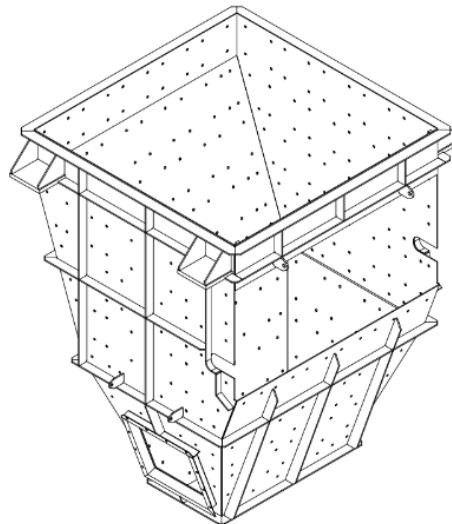
**Client:** Pilbara Minerals



**Job:** Chute 35 Liner Refurb

**Location:** Pilgangoora Operations

**Client:** Pilbara Minerals



**Job:** Drive Pulley Gearbox Replacement and Alignment

**Location:** Mt Keith

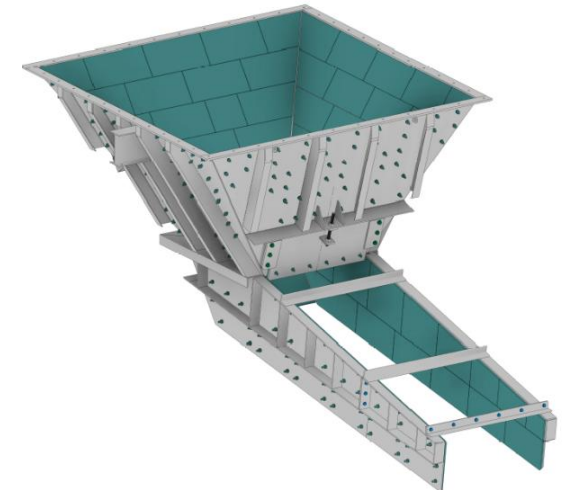
**Client:** BHP



**Job:** Secondary Crushing Feeder Chute Replacement

**Location:** Carosue Dam

**Client:** Northern Star Resources



# CERTIFICATE OF CONFIDENCE

*This is to certify that*

## Technical Maintenance Support

33 – 35 Beaver Street, Webberton WA 6530, Australia

51 Crocker Drive, Malaga WA 6090, Australia

*conforms to the requirements of*

ISO 9001:2015

Quality management systems

*Provision of mine site and workshop services, including but not limited to: engineering,  
fabrication, welding and shutdown maintenance.*

<b>Certificate number:</b>	TMZQ01-CCCQ01	<b>Certified date:</b>	6 February 2026
<b>Original date:</b>	2 February 2026	<b>Expiry date:</b>	2 February 2029

*E. Coombes*

**Evelina North-Coombes**  
B.Eng(Civil) DipOHS MIEAust CPEng (ret)  
Assurance Manager  
Equal Assurance



JAS-ANZ



**Equal Assurance Pty Ltd as trustee for The Equal Assurance Trust.**  
21/44 Kings Park Road, West Perth WA 6005, AUSTRALIA

Certificate validity and ownership as per arrangements between the client organization and Equal Assurance partner.  
Certificate status can be verified via the QR code or at <https://qdos.equalassurance.com/certificates/TMZQ01>.  
Equal Assurance partners are accredited by members of the International Accreditation Forum. Details at [www.iaf.nu](http://www.iaf.nu).  
Certificate accredited by Joint Accreditation System of Australia & New Zealand. Details at <https://www.jasanz.org>.  
All contents © Copyright 2015 Equal Assurance. All rights reserved. Details at [www.equalassurance.com](http://www.equalassurance.com).

# CERTIFICATE OF CONFIDENCE

*This is to certify that*

## Technical Maintenance Support

33 – 35 Beaver Street, Webberton WA 6530, Australia

51 Crocker Drive, Malaga WA 6090, Australia

*conforms to the requirements of*

### ISO 14001:2015

### Environmental management systems

*Provision of mine site and workshop services, including but not limited to: engineering, fabrication, welding and shutdown maintenance.*

<b>Certificate number:</b>	TMZQ01-CCEE01	<b>Certified date:</b>	6 February 2026
<b>Original date:</b>	2 February 2026	<b>Expiry date:</b>	2 February 2029

*E. Coombes*

**Evelina North-Coombes**  
B.Eng(Civil) DipOHS MIEAust CPEng (ret)  
Assurance Manager  
Equal Assurance



JAS-ANZ



**Equal Assurance Pty Ltd as trustee for The Equal Assurance Trust.**  
21/44 Kings Park Road, West Perth WA 6005, AUSTRALIA

Certificate validity and ownership as per arrangements between the client organization and Equal Assurance partner. Certificate status can be verified via the QR code or at <https://qdos.equalassurance.com/certificates/TMZQ01>. Equal Assurance partners are accredited by members of the International Accreditation Forum. Details at [www.iaf.nu](http://www.iaf.nu). Certificate accredited by Joint Accreditation System of Australia & New Zealand. Details at <https://www.jasanz.org>. All contents © Copyright 2015 Equal Assurance. All rights reserved. Details at [www.equalassurance.com](http://www.equalassurance.com).

# CERTIFICATE OF CONFIDENCE

*This is to certify that*

## Technical Maintenance Support

33 – 35 Beaver Street, Webberton WA 6530, Australia

51 Crocker Drive, Malaga WA 6090, Australia

*conforms to the requirements of*

### ISO 45001:2018

#### Occupational health and safety management systems

*Provision of mine site and workshop services, including but not limited to: engineering, fabrication, welding and shutdown maintenance.*

<b>Certificate number:</b>	TMZQ01-CCWW01	<b>Certified date:</b>	6 February 2026
<b>Original date:</b>	2 February 2026	<b>Expiry date:</b>	2 February 2029

*E. Coombes*

**Evelina North-Coombes**  
B.Eng(Civil) DipOHS MIEAust CPEng (ret)  
Assurance Manager  
Equal Assurance



JAS-ANZ



**Equal Assurance Pty Ltd as trustee for The Equal Assurance Trust.**  
21/44 Kings Park Road, West Perth WA 6005, AUSTRALIA

Certificate validity and ownership as per arrangements between the client organization and Equal Assurance partner. Certificate status can be verified via the QR code or at <https://qdos.equalassurance.com/certificates/TMZQ01>. Equal Assurance partners are accredited by members of the International Accreditation Forum. Details at [www.iaf.nu](http://www.iaf.nu). Certificate accredited by Joint Accreditation System of Australia & New Zealand. Details at <https://www.jasanz.org>. All contents © Copyright 2015 Equal Assurance. All rights reserved. Details at [www.equalassurance.com](http://www.equalassurance.com).



## **Head Office & Workshop**

33-35 Beaver Street, Geraldton WA 6530  
(08) 9965 3168 | [admin@tmsupport.com.au](mailto:admin@tmsupport.com.au)

## **Perth Office & Workshop**

51 Crocker Drive, Malaga WA 6090  
(08) 9209 3302 | [perthadmin@tmsupport.com.au](mailto:perthadmin@tmsupport.com.au)

[WWW.TMSUPPORT.COM.AU](http://WWW.TMSUPPORT.COM.AU)