



# T.M.S.

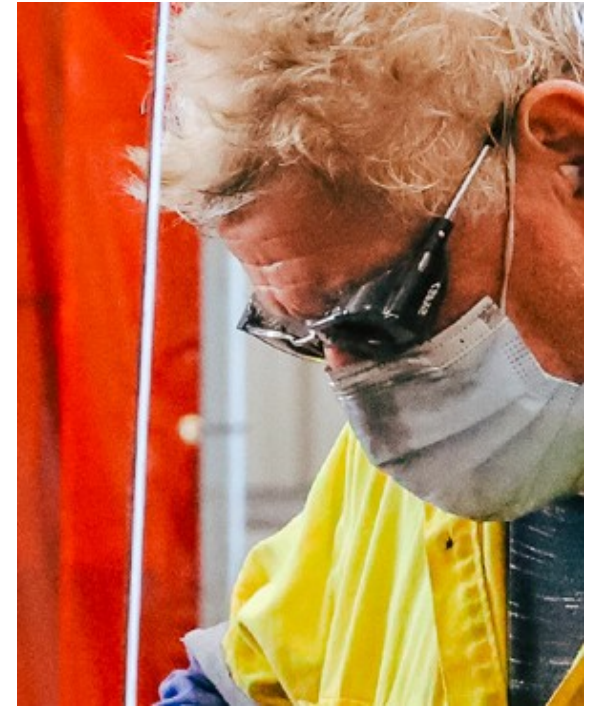
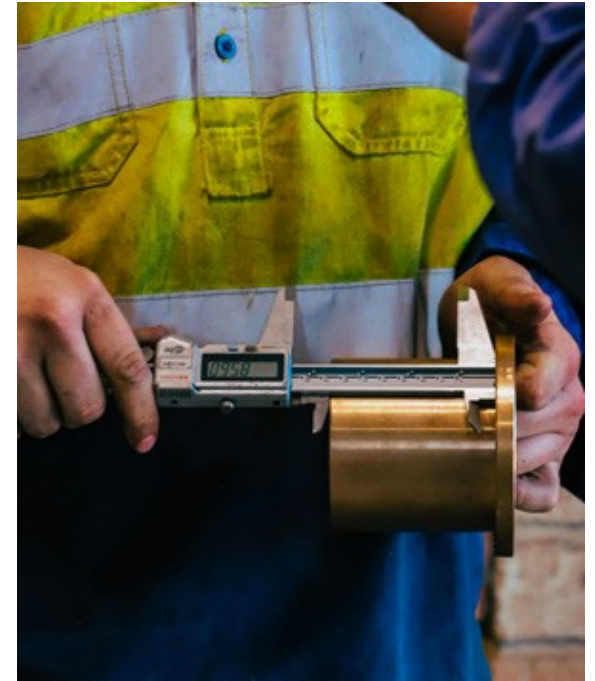
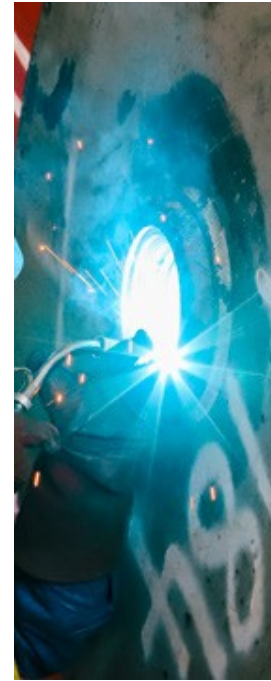
Technical Maintenance Support



**Capability Statement + Company Profile**

Reliable mine site and workshop maintenance, fabrication and construction services + quality equipment hire.









# About

Technical Maintenance Support (TMS) features a solid 10-year history. We have built a reputation for delivering quality maintenance and shutdown services to mining industry clients throughout regional and remote areas of Western Australia and the Northern Territory.

Established in 2012 by Wesley Johnson, the company has grown rapidly into a reliable, trusted, locally owned and thriving business - underpinned by the strong values and ethical standards that we display today. The TMS management group is led by our hands on Managing Director, Wesley, and together they oversee a team of 200 employees over the three divisions of:

- Administration
- Workshop
- On-Site

The experience and knowledge our management team have gained over the years is evident in their understanding of how critical down time is within the mining industry. We pride ourselves on our skilled, qualified, and experienced workforce combined with our ability to deliver all projects within deadline, inside budget and to the highest possible standard.

To date, we have successfully managed the delivery of projects of various scopes and sizes, ranging in value from \$5,000 to \$30,000,000. Our vision is to provide high quality maintenance, machining, construction, engineering and fabrication services both on and off site, to ultimately enrich communities throughout Western Australia and the Northern Territory..

# Our People

As an independently owned and operated business, we recognise the importance of our employees by actively investing in ongoing training and professional development.

We recognise that each member of our skilled workshop and on-site crew, administrative team and management personnel plays an essential role in our success. Our experienced team members offer an excellent understanding of the complexities of the mining industry and strong technical capabilities.

## **Managing Director** | Wesley Johnson

The businessman behind it all. Wesley is a Fitter/Machinist by trade and is our proactive Managing Director. From manning jobs and running the workshops to overseeing jobs onsite and estimating projects he does it all! You will still often find Wes out in the field with our clients, managing projects and coordinating his team. He has an unrivalled work ethic and a drive to succeed like no other.

## **Administration Manager** | Jenna Johnson

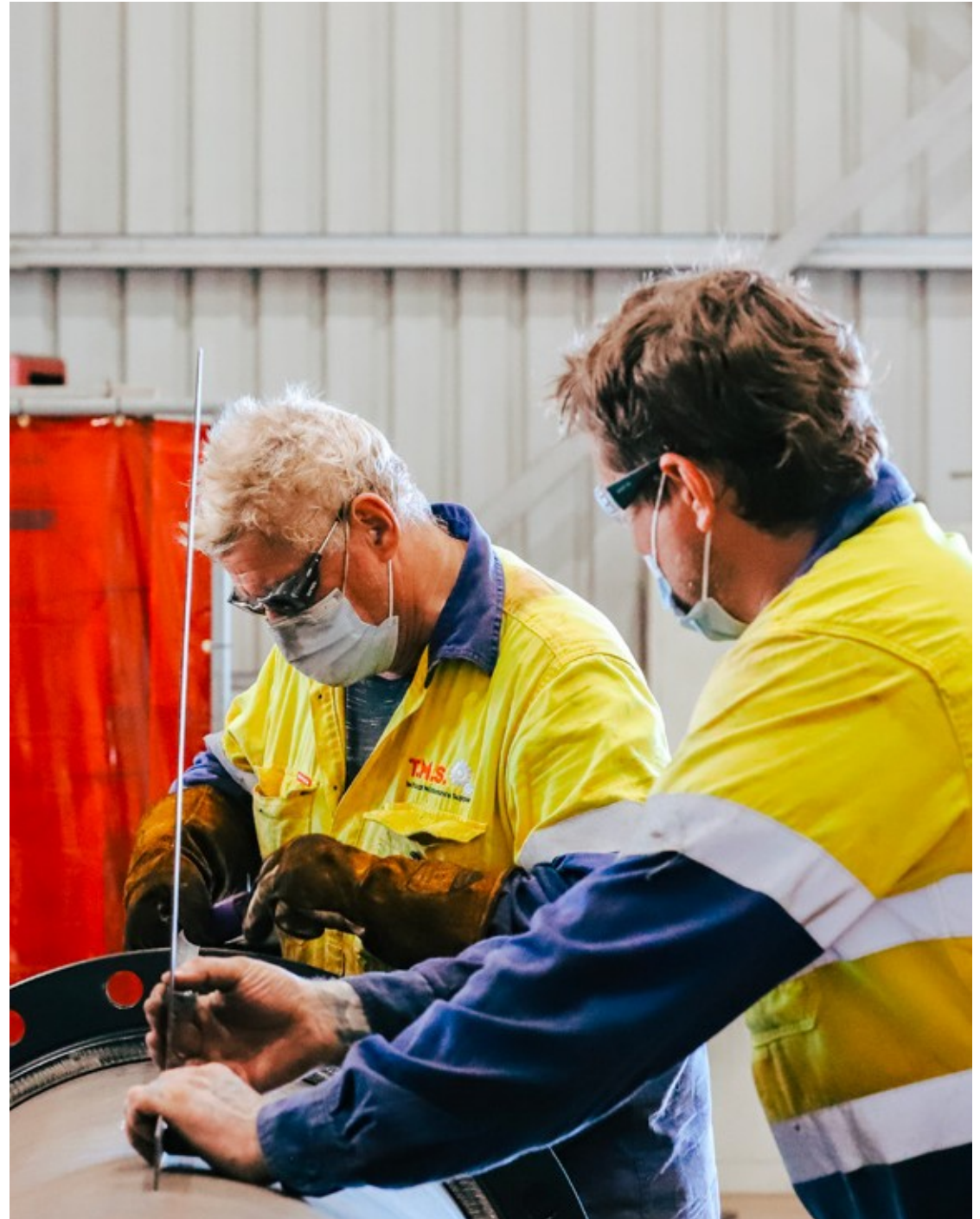
Jenna draws on her extensive experience in all aspects of Administration Management to oversee our Human Resources, Accounts and Administration teams. Playing a major role in the operations of TMS behind the scenes, Jenna's dedication and attention to detail ensures our day-to-day processes are met and the business runs smoothly.

## **Perth General Manager** | Jake Barrett

Jake is equipped with a Bachelor of Commerce with a double major in Management and Finance, as well as several industry certifications. Jake is involved in all client contracts in a senior management position. He has experience working with major clients in the Iron Ore, Lithium, Gold, Nickel, and Mineral Sands industries.

## **Kalgoorlie General Manager** | Scott McQualter

Scott holds a Cert 3 in Mechanical Engineering and has over 12 years of experience as a Fixed & Mobile plant Maintenance Superintendent in the Kalgoorlie region. Since joining TMS, Scott has been responsible for the start-up of Kalgoorlie operations. He has also been providing support services to Kalgoorlie gold and nickel producers.







# Client Relationships

We take pride in meeting and exceeding the expectations of our mining industry clients.

We've built a history of positive working relationships with a range of clients throughout Western Australia and the Northern Territory, including: -

- Pilbara Minerals
- Newcrest Mining
- Northern Star Resources
- Karara Mining Ltd
- Newmont Mining
- BHP

## **Location | Geraldton, WA**

With our custom-built office and three state-of-the-art workshops ideally located in Geraldton, TMS are well equipped to deliver maintenance, machining, construction, engineering, drafting and fabrication both off and on site, throughout Western Australia and the Northern Territory.

## **Location | Perth, WA**

In 2023 a Perth office was opened, this is where our Drafting team are located, along with Management and admin support. Being present in Perth has improved our staffing capabilities.

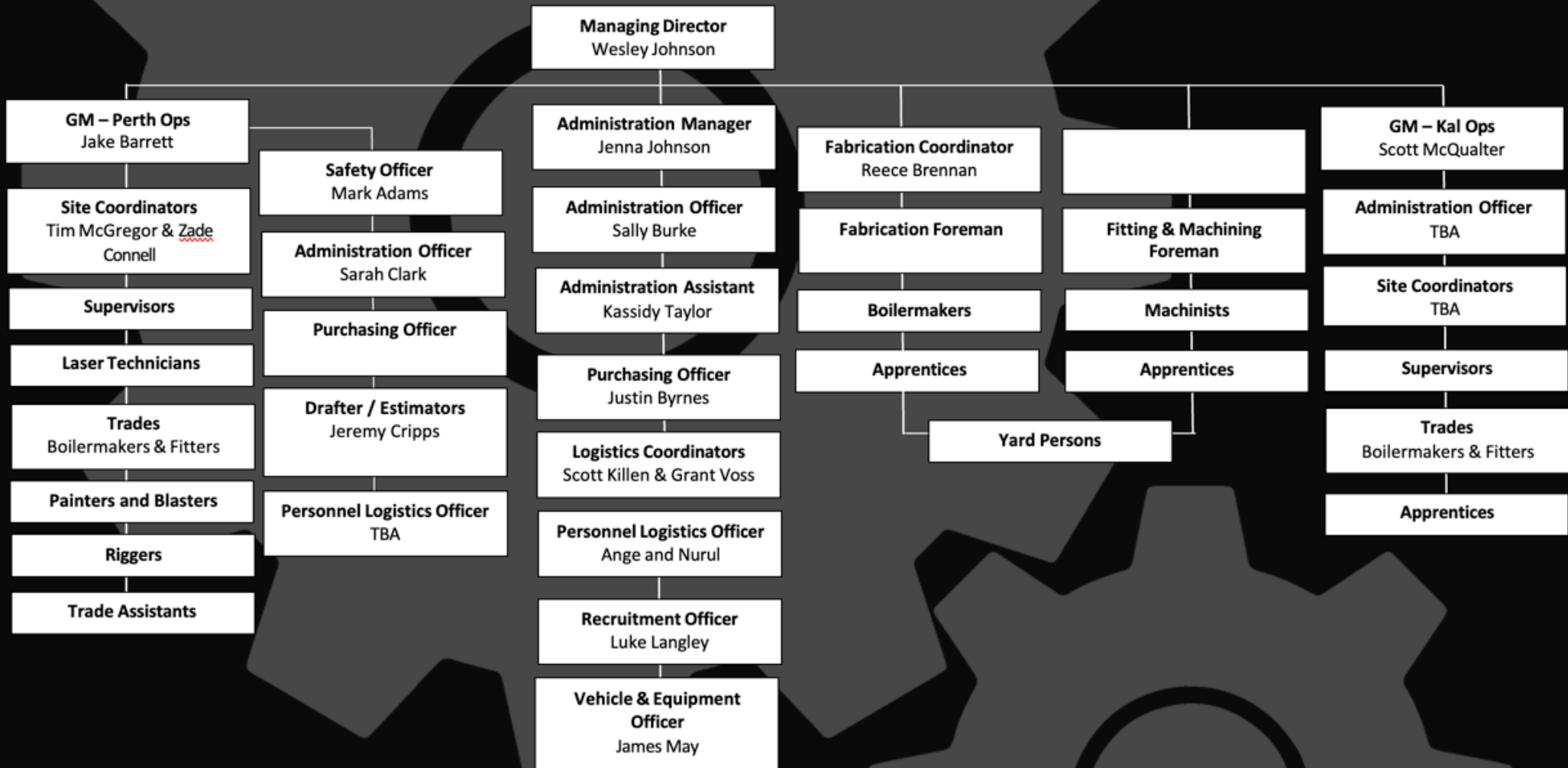
## **Location | Kalgoorlie, WA**

Our next major step in the buildup of TMS is to open a Kalgoorlie office and workshop. We currently have a General Manager located in the goldfields.

We have repeatedly demonstrated the ability to deliver projects in remote and regional environments where access to resources can be challenging and effective planning is vital.



# TECHNICAL MAINTENANCE SUPPORT ORGANISATIONAL CHART







# Services

TMS offer a diverse range of quality maintenance, inspections, fabrication and construction services. Our skilled team are trained in the latest industry methods, ensuring optimum productivity and efficiency.

## MINE SITE SERVICES

- Machining & Fitting
- Shutdown Services & Support
- Construction & Projects
- Equipment Hire
- Painting & Blasting
- Laser Alignment & Precision Measuring
- Gear Alignment & Run Outs
- Poly Welding
- 3D Scanning
- Planning Support
- Technical Writing Support

## WORKSHOP SERVICES

- Machining
- CNC Machining
- Fitting & Fabrication
- Engineering
- Drafting
- General Maintenance
- Painting & Blasting
- Rubber Lining

# Plant & Equipment Hire

Our extensive fleet of well-maintained trucks, vehicles, plant and equipment enable us to offer a variety of solutions and deliver multiple projects simultaneously.

We offer a variety of plant and equipment for hire to our clients, including:

- Small tool chests (site boxes)
- Small tandem axle tool trailer
- Medium tool trailer
- Large tool trailers & truck
- Polywelder
- Site compliant vehicles (4WD, Bus, Trucks)
- 40 Seater Bus
- GoPro laser alignment technology
- Commtest VB7 vibration analysis equipment
- Vibration meter 320
- Assorted precision measuring equipment
- Hytorc equipment
- Generators & welders
- Onsite painting & blasting equipment
- Faro Focus Premium 3D Scanner
- 25t Franna
- Compressor







# Difference

## PLANNING

**We understand the importance of developing a functional and achievable plan to ensure the success of all works undertaken within a project.**

Creation and implementation of a quality strategic plan will reduce down time, improve cost control and optimize outages for the best possible chance of success. At TMS, we're more than happy to support your planning group or build a customised plan dependent on your project needs.

## REPORTING

**We believe that providing a detailed report at the conclusion of all major projects is a necessity.**

Our reports are transparent, objective and include findings and recommendations for future projects. These reports are critical for future planning and contribute to our client's piece of mind. We operate under a philosophy of continuous improvement in quality and performance.



# Compliance

## Health and Safety

Providing a safe and healthy work environment for our employees is paramount. Our policies and procedures have been developed through a combination of extensive experience in the mining industry, consultation, supervision and ongoing professional training and development. We take great care to ensure that all of our work practices comply with the "Workplace Health and Safety Act" and other relevant legislation, on site policies, codes of practice and industry standards.

## Insurance

To ensure our clients, our team the general public and our stakeholders are protected, we are covered for Public & Products Liability, Professional Indemnity and Workers Compensation Insurance.

If you require a copy of a cover note, please reach out to our Administration team at [admin@tmsupport.com.au](mailto:admin@tmsupport.com.au)

## Environment

We are committed to minimizing our impacts on the environment and environmental improvement. We work with our clients, suppliers and the community to develop policies and adopt innovative procedures that reduce waste, increase the use of environmentally acceptable materials and actively promote environmental awareness amongst our team. We develop and implement an Environmental Management Plan for every project we undertake.





# Community Engagement

We have donated our time and resources to a variety of sporting events, clubs, charities and community events over the past decade.

We believe that as a successful Western Australian business it is our responsibility to give back to the community that supports us.

- Bluff Point Strathalbyn Cricket Club
- Midwest Charity Begins at Home
- Northampton Shire
- Geraldton Hockey Association
- Lions Cancer Institute Special Children's Big Day Out
- Northampton Tourist Association
- Batavia Coast Baseball and Tee-ball League
- Moonyoonooka Horse and Pony Club
- Major sponsors of the 2022 WAFL & WAFLW match in Northampton





# Case Studies

## WORKSHOP PROJECTS

**Machining:** Gear Slew Ring Covers  
**Client:** Midwest Port Authority  
**Location:** TMS Workshop  
**Time Frame:** February 2022  
**Value:** \$22k

**CNC Machining:** Main Filter Support Rails  
**Client:** Karara Mining Ltd  
**Location:** TMS Workshop & KML mine site  
**Time Frame:** 2018 - ongoing  
**Value:** \$5mil

**Fabrication:** 60x 750NB Tails Pipe Spools  
**Client:** Newcrest Mining Ltd  
**Location:** TMS Workshop & Telfer mine site  
**Time Frame:** Jan 2021  
**Value:** \$780k

## MINE SITE PROJECTS

**Mill:** Ball Mill Works  
**Client:** Newmont  
**Location:** Tanami  
**Time Frame:** September 2021  
**Value:** \$350k

**Gearbox:** Hoffman Gearbox & Trunnion Seals  
**Client:** Newmont  
**Location:** Tanami  
**Time Frame:** September 2021  
**Value:** \$500k

**Crusher:** Countershafts & Eccentric Works  
**Client:** Karara Mining Ltd  
**Location:** Karara mine site  
**Time Frame:** January 2018  
**Value:** \$200k

For 5+ years we have called on TMS to assist with our specialised maintenance requirements on our ball mills and CDS FFP2500 filter presses.

The TMS team have been proactive, reliable, safety-focused and have a strong work ethic. The skills and technical knowledge provided are of a very high level. As a result, our availability and the reliability of our filter presses and ball mills has improved. TMS always try to respond to breakdown situations and have helped us out on many occasions. TMS management are professional, proactive, and very responsive.

**Justin Macdonald** | Karara Mining Ltd





## Head Office & Workshop

33-35 Beaver Street, Geraldton WA 6530  
(08) 9965 3168 | [admin@tmsupport.com.au](mailto:admin@tmsupport.com.au)

## Perth Office

234 Railway Parade, West Leederville WA 6007  
(08) 9388 6669 | [perthadmin@tmsupport.com.au](mailto:perthadmin@tmsupport.com.au)

**[WWW.TMSUPPORT.COM.AU](http://WWW.TMSUPPORT.COM.AU)**